



World Headquarters
 Teamstudio, Inc.
 900 Cummings Center
 Suite 326T
 Beverly, MA 01915
 Sales: 800-632-9787
 Phone: 978-232-0145
 Fax: 978-232-0146
contactus@teamstudio.com

EMEA

Teamstudio Europe Ltd.
 United Kingdom
 Phone: +44 (0) 1480 424600
 Fax: +44 (0) 1480 411794
contactus@teamstudio.com

France

Teamstudio Europe Ltd.
 Phone: +33 (0) 140 21 42 34
 Fax: +33 (0) 140 21 42 35
contactus@teamstudio.com

APAC

Teamstudio Japan K.K.
 Phone: +81 (0) 3 6230 0810
 Fax: +81 (0) 3 6230 0811
contactusjapan@teamstudio.com

© Copyright 2010 Teamstudio, Inc. All rights reserved. Teamstudio, CIAO! and Just Enough Governance are registered trademarks of Teamstudio, Inc. The IBM logo and the Business Partner emblem are trademarks of International Business Machines Corporation in the United States, other countries, or both. All other trademarks and registered trademarks are the property of their respective owners.



Teamstudio® Design Manager

Component library management system

- Easily reuse elements and maintain dependencies
- Automatically copy dependent elements to target database
- Analyze the impact of potential template changes
- Designate any template or database as a components library
- Improve the reliability of your base library of known good code

Code reuse is a core principle in development best practices. After all, why reinvent the wheel when you've already put a lot of work into building and testing the same thing? Why waste precious time and resources building from scratch something you've built before?

And yet, while the virtues of code reuse are undeniable, making the practice part of your standard operating procedure can be quite complicated—unless you're using Teamstudio® Design Manager.

Design Manager enables developers to build and share libraries of reusable design elements that can be easily searched, previewed, and re-used in a given database design. Design Manager lets you create Notes databases quickly and easily from standard libraries of components, confident the results will meet organizational standards.

A better way to reuse code than copy and paste

The most obvious way to reuse something *here* that you created *there* is to copy it and paste it. But, since Notes® doesn't automatically copy dependencies, you have to sort through the tangle of shared elements, such as sub-forms and images, to preserve the relationships the application needs to function properly. With Design Manager you can simply drag and drop whole elements, and it will automatically detect dependencies and copy them to the target database. To ensure that no dependent elements go missing over time, Design Manager's *Scan for Dependencies* function will scan any databases you select and identify any missing dependent elements.

See the impact of a change before pulling the trigger

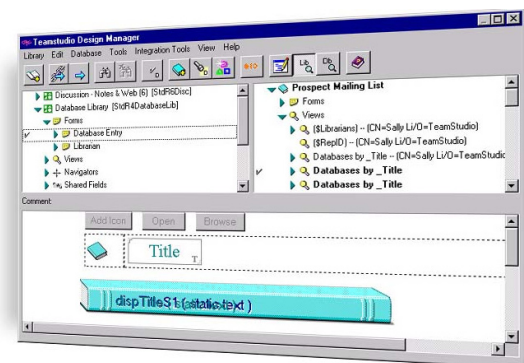
Design Manager removes the pressure and risk of making changes to template elements by revealing which applications will be affected and how. Design Manager's Library and Database panes show template-linked elements in bold, making it clear which template elements are inherited.

In fact, clarity and control are the underlying goal of much of Design Manager's functionality. For example, Design Manager's *Group Objects* feature lets you associate design elements under a single reference name that can then be dragged and dropped into target databases. *Compare Elements* lets you compare any two design elements (if, for example, you wanted to compare two elements with the same name in different libraries). *Copy History Log* tracks the history of elements copied from a library file to a database and lets you see all elements copied to a database and all databases to which an element has been copied.

For total database clarity, control, and efficiency, Design Manager integrates seamlessly with Teamstudio Analyzer, Teamstudio CIAO!®, and Teamstudio Configurator.

Related products:

Teamstudio Analyzer
 Teamstudio CIAO!®
 Teamstudio Delta
 Teamstudio Configurator
 Teamstudio Profiler



Build and share libraries of reusable code with Design Manager