

teamstudio script browser

LotusScript Code Navigator

Introduction

Teamstudio Script Browser is a tool to help you use and navigate the LotusScript code stored within an IBM Lotus Notes database in a way that has never before been possible.

Navigating the various places where LotusScript can be defined is tedious and even confusing to even the most-seasoned Domino programmer. There is currently no way to easily navigate all the different ways that script can be linked together.

It's common to have LotusScript code be defined in different places within a Notes database. Seeing all the code and moving around in Designer to edit that code is not a simple task. You can't see what LotusScript functions are calling other LotusScript functions without performing a database-wide search. Teamstudio Script Browser solves all these problems.




Functional Features

Teamstudio Script Browser shows:

- All classes, functions and variables/members from the main tree, with 2 tabs to sort the code by script library, by class. Selecting something in the tree displays the properties of that function/class.
- For each class the member variables are identified along with the type
- For each function the local variables are identified along with the type
- The name of the script library in which the function is found.
- The line number on which the function is defined within the script library.
- How the function was declared, especially useful for when you simply want to know what parameters to pass to a function.

After installing Script Browser the following toolbar icons will be available:



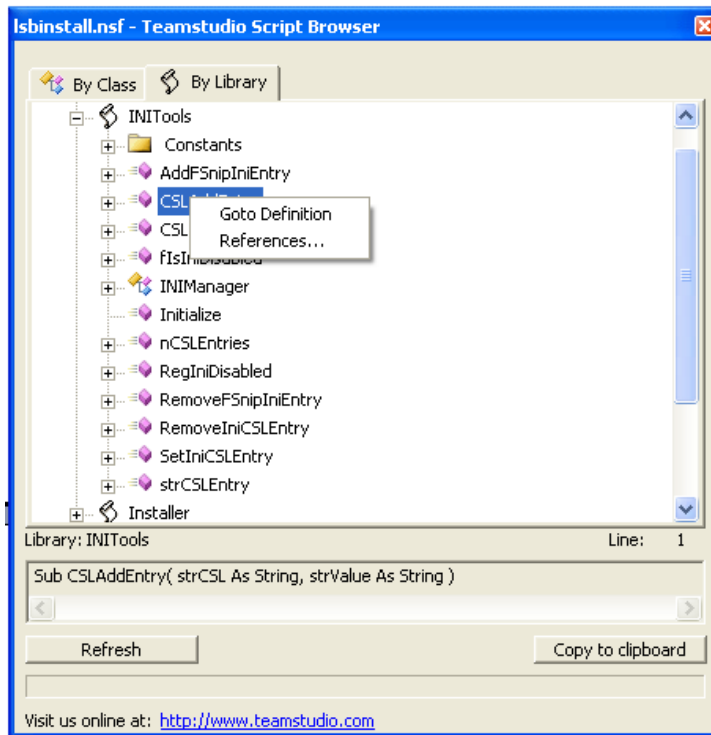
Tools	
	This icon launches Script Browser.
	"Open Script Library" - This icon will open Script Browser and jump the script library that is highlighted in the code editor .
	"Go to Definition" - This icon will open Script Browser and jump to the symbol that is under the cursor in the code editor.

Using Teamstudio Script Browser

To use Script Browser, simply open a database in Domino Designer and click on the toolbar icon



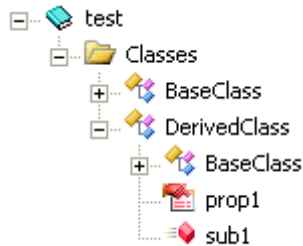
Icon Key	
	Class
	Script Library
	Function / Sub
	Property Get
	Property Set
	Private Function / Sub
	Function override
	Type
	Public Variable / Member
	Private Member
	Function / Sub Parameter
	External 'C' Declared functions
	Constant



The By Class and By Library show you a hierarchical list of all the shared LotusScript in your database.

Class Inheritance

Class inheritance is represented in Script Browser in two ways. The first way is by including the base class in the tree as a child of sub class. The second way inheritance is represented is by changing the color of the icons for each function that have been overridden from blue to red.



The class “DerivedClass” inherits from the class “BaseClass”. “DerivedClass” also overrides the subroutine “sub1” and the property “prop1”.

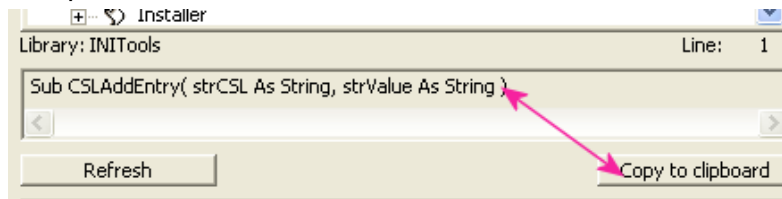
Window shade Mode

Double-clicking on the caption bar will cause the window to become compacted so you can continue working without Script Browser getting in your way. When the mouse moves into the compacted Script Browsers window, the window will automatically expand back to its original size.



Getting Around

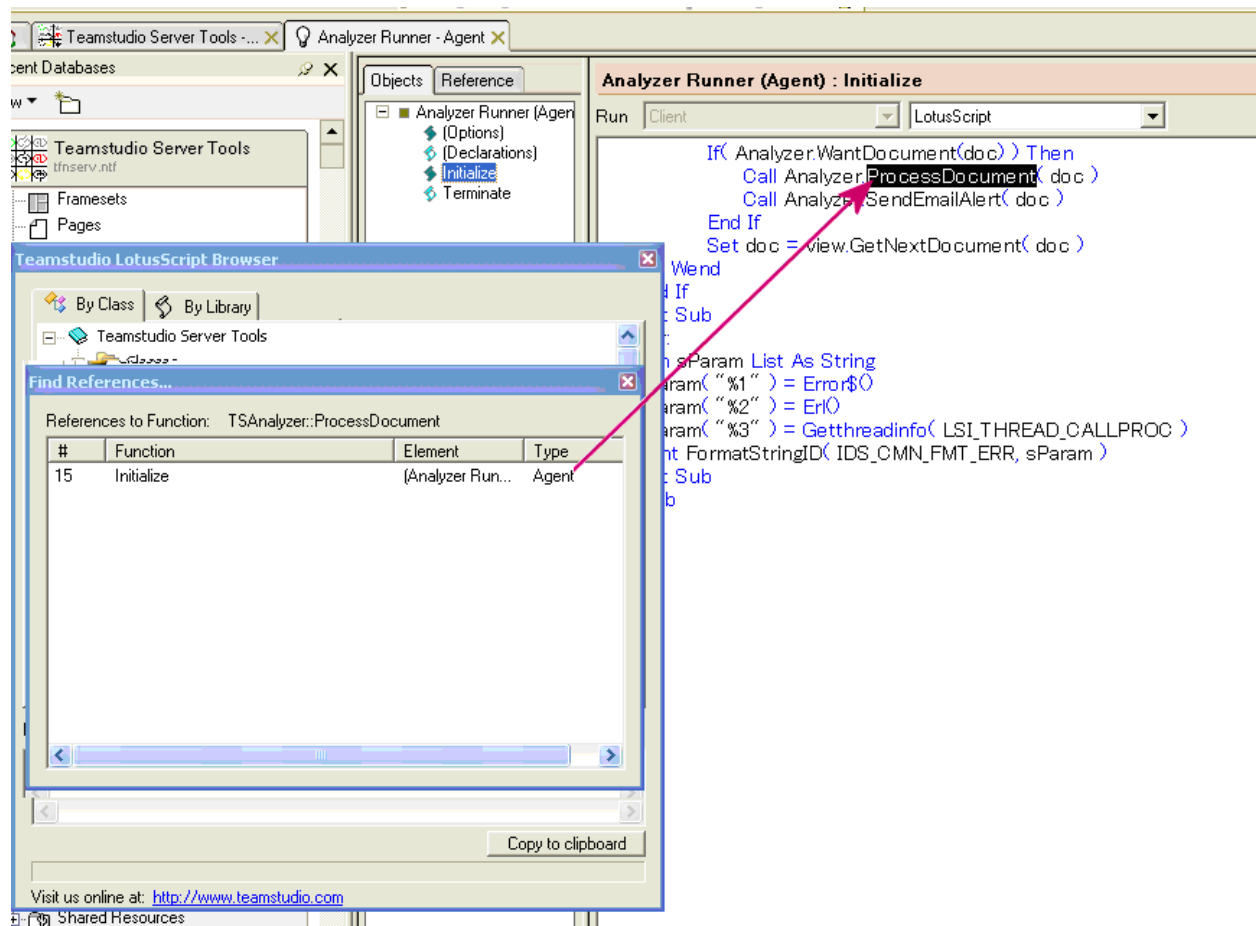
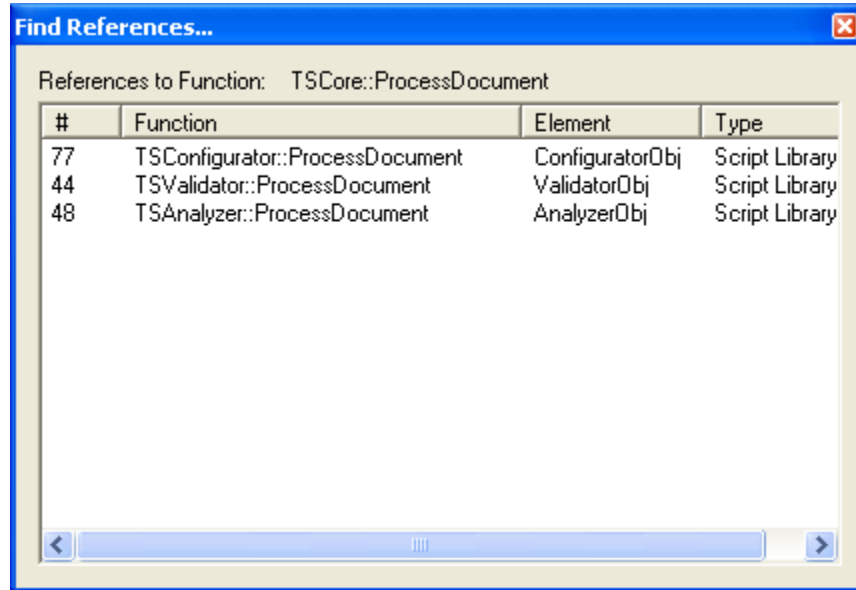
Copy To Clipboard – The Copy to clip board button will copy the text from the definition window to the clipboard so you can paste it into the editor.



Refresh – The Refresh button will reload the Script Browser window by re-reading the database design. This will pick up any changes you have made to the code since the last time you launched Script Browser.


Right Click Menu – Right-clicking on something in the tree brings up a menu with two options:

1. **Goto Definition:** Opens the script library in Designer and then scrolls to the function. It will also highlight the code in Designer so you can find it easily. This function is only supported in Notes 6.
2. **References:** Scans the database for all the places the function or variable or member is called or referenced and displays them in a list. You can then double-click an item in the list and Script Browser will open the note in Designer and, if it is in a script library or agent, will navigate to the code.



Double-clicking on any function in LS Browser will bring you right to the function definition.

Goto Definition SmartIcon

The Goto Definition smart icon  works by looking at the text under the cursor in the LotusScript editor and then finding the definition of that symbol inside the code Script Browser has loaded in its window. For example, let's say there is a function being called in the script you are editing. In this example the 'getString' call is being used, but you are not sure what that does or where it is defined.

```
Installer (Script Library) : InstallDLL
Sub InstallDLL( doc As NotesDocument, strRawPath As String, strFileN
    Dim strTempPath As String
    Dim strFullPath As String
    Dim obj As NotesEmbeddedObject
    Dim rc As Integer

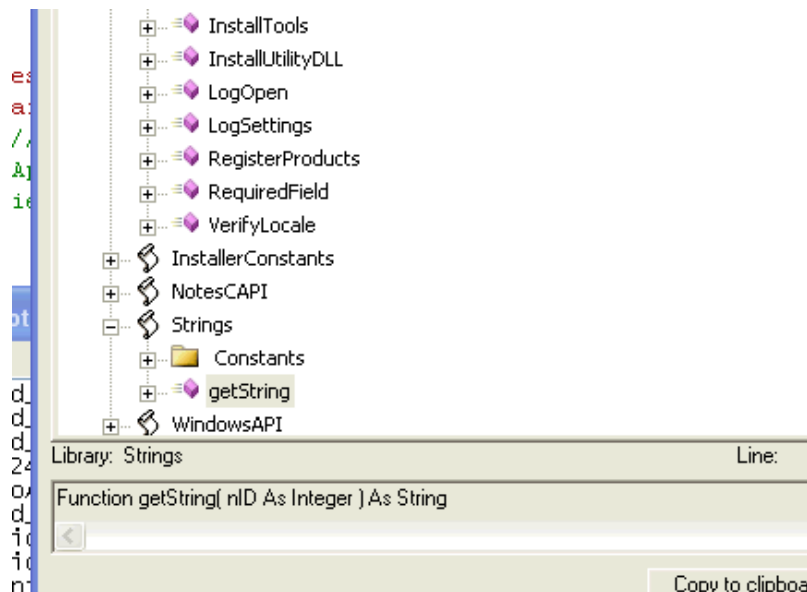
    strTempPath = getTempFile( doc )

    ' Install the DLL to temp
    Print getString( IDS_PRINTMSG_INSTALLING ) & strFileName & ".
    Set obj = doc.GetAttachment( strFileName )
    obj.ExtractFile( strTempPath )

    ' If later version, then install
    rc = InstallDLL32( strTempPath, strRawPath + strFileName)


    Select Case rc
```

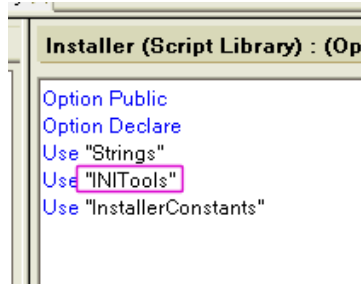
To use the Goto Definition function first, click on the text 'getString'. Then click the 'Goto Definition' smarticon and Script Browser will open and jump to that item in the tree:



Right away, you can see the function definition and that it is defined in the 'Strings' script library. From there you can then either double click on it and the function will open in Designer, or you can right click and find out all the other places that function is referenced. You can do the same thing for any of the custom defined symbols in the database. Script Browser will find the symbol no matter where it is defined.

Open Script Library SmartIcon

The 'Open Script Library' smart icon  works in a similar way to the 'Goto Definition' button. First place the cursor on the name of a script library in the LotusScript Editor:



Then click the smart icon and Script browser will jump to the library you have selected.

System Requirements

- Processor and memory specification per typical Notes installation
- Microsoft Windows 95/98/NT (Release 4.0 or later) /2000/XP (as supported by Notes) on Intel (x86) platforms
- Lotus Notes R5.x, R6.x, R7.x, R8.0 (Navigation feature requires Notes R6.x or higher)

Support

Please note that this is a free utility and is for use at your own discretion. While Script Browser is not an officially supported product, we want to know about any bugs you may experience, and we always welcome any feedback that may help improve the tool. E-mail us at one of the addresses below.

For more information please visit:

teamstudio.com

World Headquarters

Teamstudio, Inc.
900 Cummings Center
Suite 326T
Beverly, MA 01915
Sales: 800-632-9787
Phone: 978-232-0145
Fax: 978-232-0146
contactus@teamstudio.com

EMEA

Teamstudio Europe Ltd.
8 Ramsey Court
Hinchinbrooke Business Park
Kingfisher Way
Huntingdon
PE29 6FY
United Kingdom
Phone: +44 (0) 1480 424600
Fax: +44 (0) 1480 411794
contactus@teamstudio.com

APAC

Teamstudio Japan K.K.
Tosen Higashi Azabu Bldg 9F
1-5-2 Higashiazabu
Minato-ku Tokyo 106-0044
Japan
Phone: +81 (0) 3 6230 0810
Fax: +81 (0) 3 6230 0811
contactusjapan@teamstudio.com

© Copyright 2008 Teamstudio, Inc. All rights reserved. Teamstudio is a registered trademark of Teamstudio, Inc. All other trademarks and registered trademarks are the property of their respective owners. Our policy is one of continuous improvement and we reserve the right to change product specifications without notice.